

# GALLERY

United Kingdom and Ireland

# 2025

Contact us to book



# VMZINC

# Introduction



## UNESCO recognises zinc roofers and ornamentalists

The traditional art and heritage of zinc roofing and ornamentation is passed down from generation to generation through roofing training centres in Paris and across France.

UNESCO, on December 4th, 2024, recognised the importance of maintaining the continuity of this traditional art and heritage by adding the "Know-how of Parisian Zinc Roofers and Ornamentalists" to its Indicative list of the Intangible Cultural Heritage of Humanity.

## Company profile

VMZINC® has been manufacturing a wide range of rolled zinc products used primarily for building envelopes since 1837. In addition to batten cap and standing seam roof systems, products include rainwater systems, a wide range of cladding systems, including a number of rainscreen facade products. Since its creation the company has also produced decorative roofing products such as dormers, bull's eyes, weather vanes, finials and balustrades.

## Benefits of VMZINC®

- Lightweight and durable
- Fully recyclable
- A service life of 100 years
- Virtually maintenance-free
- Can be installed on roof pitches as low as 3°
- Complex shapes can be clad using VMZINC
- All flashings and trim can be in the same material
- BRE EPD profile EN 15804
- BBA certified
- Conforms to EN 988
- Fire performance – No flame spread or penetration following Brooft4 testing. Fire classification according to EN 13501-1:2018 – A1
- Available in a choice of either natural finish or 10 pre-weathered finishes
- Cost effective
- Wide range of panel types

### Front cover building credit

Architect: PIP Architects and Moses Cameron Williams Architects Project: Old Swiss Laundry

The Syndicate of French Companies in Climate Engineering, Roofing, and Plumbing (the GCCP), VMZINC, Mayor Delphine Bürkli of Paris's 9th arrondissement, and other companies, joined together to make this significant recognition happen!



VMZINC Finishes

# Contents

## Public/Private Housing



4 Channels Development – Housing



6 Annesley Gardens – Housing



7 Baligrundle – Private House



5 Dover Court – Public Housing



8 Stagecoach The Depot – Housing

## Educational/Recreational



9 Mote Park – Pavilion and Café



10 Park Lane School – SEND School



11 St Crispin's – Student Accommodation

## Cultural



12 Eyemouth Pavilions – Civic Centre



13 Monaghan Peace Campus – Cultural Centre



14 The Edge – Cultural Centre

## Commercial/Healthcare



15 10 Greycoat Place – Offices



16 19 Dacre Street – Offices



17 Feilden House – Offices



18 Inishowen – Commercial Development



19 Old Swiss Laundry – Business Development



20 RNLI – Lifeboat Station



21 Roxburghe Hotel



22 Voco Hotel



23 St Mary's Hospital

# Public/Private Housing

## Housing

**Channels  
Development,  
Chelmsford**

**Architect**  
JAP Architects

**Contractor**  
Full Metal Jacket Ltd

**Type of zinc**  
QUARTZ-ZINC PLUS

**System used**  
Standing seam roofing

**Surface area of zinc**  
1800m<sup>2</sup>

**Photo credit**  
Paul Kozlowski



# Public/Private Housing

## Public Housing

### Dover Court, London N1

**Architect**  
Pollard Thomas Edwards  
Architects

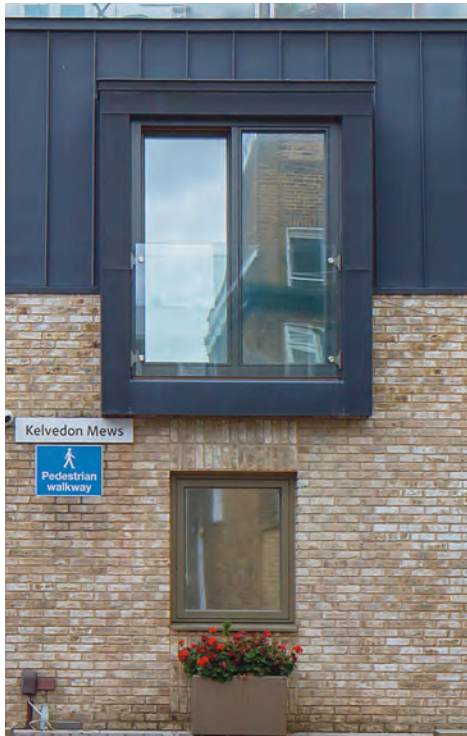
**Contractor**  
NDM Metal Roofing  
and Cladding  
(no longer active)

**Type of zinc**  
ANTHRA-ZINC PLUS

**System used**  
Standing seam roofing

**Surface area of zinc**  
900m<sup>2</sup>

**Photo credit**  
Paul Kozlowski



# Public/Private Housing

## Housing

### Annesley Gardens, Dublin

**Architect**  
Metropolitan Workshop

**Contractor**  
Joe Duffy Roofing Ltd

**Type of zinc**  
PIGMENTO RED PLUS  
and  
QUARTZ-ZINC PLUS

**System used**  
Standing seam roofing  
and facades

**Surface area of zinc**  
1600m<sup>2</sup>

**Photo credit**  
Paul Kozlowski



# Public/Private Housing

Private House

**Baligrundle,  
Isle of Lismore,  
Scotland**

**Architect**  
CP Architects

**Contractor**  
HL Metals

**Type of zinc**  
PIGMENTO CHARCOAL  
BLUE PLUS

**System used**  
Standing seam roofing  
and facades

**Surface area of zinc**  
300m<sup>2</sup>

**Photo credit**  
Paul Kozlowski



# Public/Private Housing

## Housing

### Stagecoach, The Depot, Manchester

Architect  
Buttress Architects

Contractor  
North West  
Metal Roofing

Type of zinc  
ANTHRA-ZINC PLUS

System used  
Standing seam roofing

Surface area of zinc  
5500m<sup>2</sup>





# Educational/Recreational Pavilion and Café

## Mote Park, Maidstone

Architect  
GDM Architects

Contractor  
Salmon Solutions

Type of zinc  
ANTHRA-ZINC PLUS

System used  
Standing seam roofing  
and cladding

Surface area of zinc  
750m<sup>2</sup>

Photo credit  
Paul Kozlowski



# Educational/Recreational

## SEND School

### Park Lane School, Macclesfield

**Architect**  
Halliday Meecham  
Architects

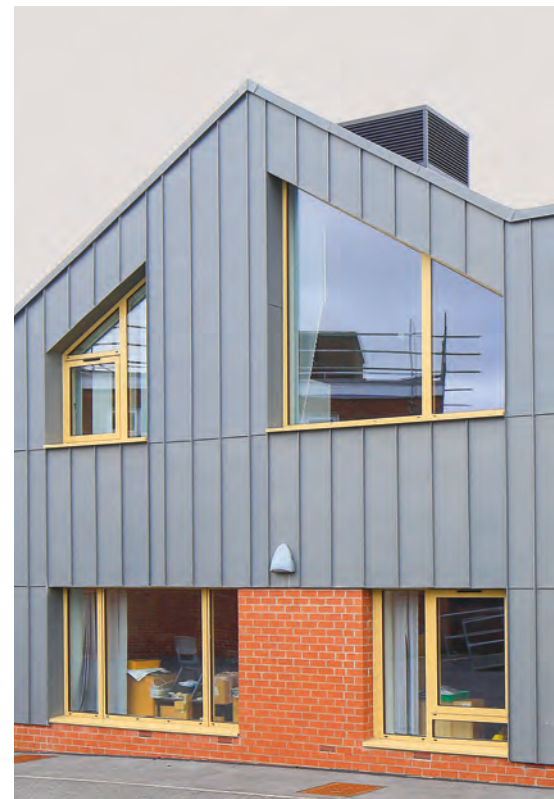
**Contractor**  
Longworth

**Type of zinc**  
QUARTZ-ZINC PLUS

**System used**  
Standing seam roof  
and wall

**Surface area of zinc**  
450m<sup>2</sup>

**Photo credit**  
Paul Kozlowski



# Educational/Recreational

## Student Accommodation

### St Crispin's House, Norwich

**Architect**  
Hadfield Cawkwell  
Davidson

**Contractor**  
Winkworth Metal  
Roofing Ltd

**Type of zinc**  
QUARTZ-ZINC

**System used**  
Standing seam  
facade

**Surface area of zinc**  
700m<sup>2</sup>

**Photo credit**  
Paul Kozlowski



# Cultural Civic Centre

## Eyemouth Pavilions, Eyemouth, Scotland

Architect  
Galmstrup Architects

Contractor  
FD Roofing and  
Cladding Ltd

Type of zinc  
QUARTZ-ZINC PLUS

System used  
Standing seam roofing

Surface area of zinc  
300m<sup>2</sup>

Photo credit  
Paul Kozlowski



# Cultural

Cultural Centre

**Monaghan Peace  
Campus,  
Ireland**

**Architect**  
Hall Black Douglas  
Architects

**Contractor**  
Sealmax Roofing Ltd

**Type of zinc**  
PIGMENTO BLUE PLUS

**System used**  
Standing seam roofing  
and cladding

**Surface area of zinc**  
1300m<sup>2</sup>

**Photo credit**  
Paul Kozlowski



# Cultural

Cultural Centre

## The Edge, Whitehaven

**Architect**  
Northmill Associates

**Contractor**  
Lindas Group Ltd

**Type of zinc**  
PIGMENTO RED PLUS

**System used**  
Standing seam roofing  
and cladding

**Surface area of zinc**  
1000m<sup>2</sup>

**Photo credit**  
Paul Kozlowski



# Commercial/Healthcare Offices

## 10 Greycoat Place, London

**Architect**  
Veretec and SPPARC

**Contractor**  
Albany Brent Roofing  
(no longer active)

**Type of zinc**  
PIGMENTO RED

**System used**  
Standing seam roofing

**Surface area of zinc**  
800m<sup>2</sup>

**Photo credit**  
Paul Kozlowski



# Commercial/Healthcare Offices

**19 Dacre Street,  
London**

**Architect**  
Darling Associates  
Architects

**Contractor**  
Salmon Solutions

**Type of zinc**  
PIGMENTO BLUE

**System used**  
Standing seam facades

**Surface area of zinc**  
350m<sup>2</sup>

**Photo credit**  
Paul Kozlowski





# Commercial/Healthcare Offices

## Feilden House, Norwich

**Architect**  
Feilden+Mawson  
Architects

**Contractor**  
Zink.It Limited

**Type of zinc**  
QUARTZ-ZINC  
and  
PIGMENTO BROWN

**System used**  
Standing seam facade  
and flat lock

**Surface area of zinc**  
1000m<sup>2</sup>

**Photo credit**  
Paul Kozlowski



# Commercial/Healthcare

## Commercial Development

**Inishowen  
Innovation,  
Buncrana,  
Ireland**

**Architect**  
MacGabhann  
Architects

**Contractor**  
Edgeline Metal  
Roofing

**Type of zinc**  
PIGMENTO BLUE PLUS

**System used**  
Standing seam roofing  
and cladding +  
flat lock wall cladding

**Surface area of zinc**  
570m<sup>2</sup>

**Photo credit**  
Paul Kozlowski



# Commercial/Healthcare

## Business Development

### Old Swiss Laundry, Cambridge

#### Architect

PiP Architects  
and  
Moses Cameron  
Williams Architects

#### Contractor

All Metal Roofing Ltd  
and  
A Class Metal Roofing Ltd

#### Type of zinc

PIGMENTO ORANGE,  
QUARTZ-ZINC  
and ANTHRA-ZINC

#### System used

Standing seam, batten,  
Adeka and interlocking  
panels

#### Surface area of zinc

3800m<sup>2</sup>

Photo credit  
Paul Kozlowski



# Commercial/Healthcare

## Lifeboat Station

**RNLI  
Tower Lifeboat  
Station,  
London**

**Architect**  
Studio Four Architects

**Contractor**  
Zinclad

**Type of zinc**  
QUARTZ-ZINC PLUS

**System used**  
Standing seam roof  
and walls

**Surface area of zinc**  
950m<sup>2</sup>

**Photo credit**  
Paul Kozlowski



# Commercial/Healthcare

## Hotel

**Roxburghe Hotel,  
Kelso,  
Scotland**

**Architect**  
ISA

**Contractor**  
Pinnacle Roofing Ltd

**Type of zinc**  
QUARTZ-ZINC PLUS

**System used**  
Standing seam roofing

**Surface area of zinc**  
1690m<sup>2</sup>

**Photo credit**  
Paul Kozlowski



# Commercial/Healthcare

## Hotel

**Voco Hotel,  
Torphichen Street,  
Edinburgh**

**Architect**  
Mason facades

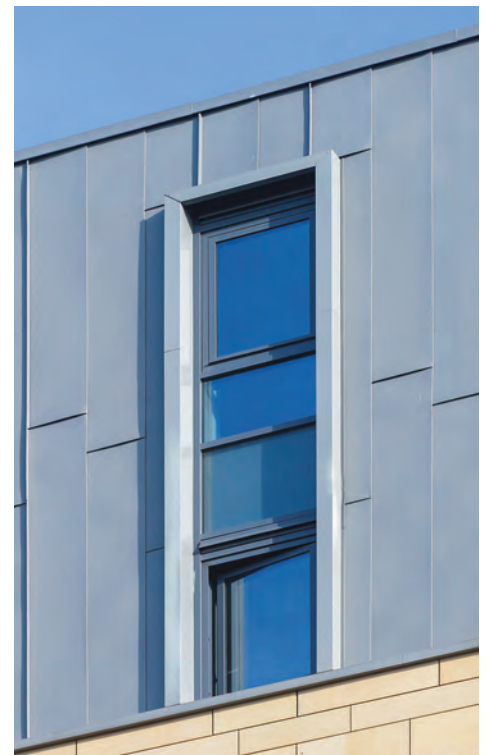
**Contractor**  
Mason Facades

**Type of zinc**  
QUARTZ-ZINC

**System used**  
Standing seam  
and  
flat lock wall panels

**Surface area of zinc**  
1000m<sup>2</sup>

**Photo credit**  
Paul Kozlowski



# Commercial/Healthcare

## Hospital

**St Mary's Hospital,  
Drogheda,  
Ireland**

**Architect**  
Kennedy Fitzgerald  
Architects

**Contractor**  
Sealbuild Ltd

**Type of zinc**  
PIGMENTO BROWN  
PLUS

**System used**  
Standing seam roofing  
and cladding

**Surface area of zinc**  
1200m<sup>2</sup>

**Photo credit**  
Paul Kozlowski



# Usage and contact information

## Use a Professional

As well as following design recommendations it is critical that VMZINC is installed in the correct manner and by trained professionals.

VMZINC provides training for installers with experience in metal roofing and cladding in partnership with the Lead Sheet Training Academy and the NCTS. This training is designed to supplement trained professionals with specific information concerning VMZINC.

## VMZINC at Work

We would also recommend that contractors be members of associations such as the Federation of Traditional Metal Roofing Contractors. Furthermore, VMZINC offers a list of recognised contractors that adhere to specific conditions concerning experience and training, namely VMZINC at WORK.

## RIBA Approved CPD Seminars

Please contact us to book a CPD seminar entitled 'Zinc as Building Envelope' or 'Zinc as a Facade Material'. This seminar covers many subjects including aesthetics, applications, design requirements, installation methods as well as sustainability.

## CAD Details

A large library of CAD drawings in both .dwg and .pdf format is available. We also offer BIM objects.

## NBS Specifications

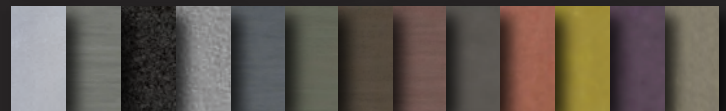
We offer specifications for all of our systems. These can be either downloaded or sent out from our office.

## Bespoke Roof and Wall Design

Panel layouts and project specific details can be created for projects when standard detailing may not quite be enough.

## Samples

Please contact us for material samples on all of our finishes. We can also send out larger samples for planning. All our literature is available online.



## VM Building Solutions UK Ltd

Collier House,  
Mead Lane,  
Hertford, Herts,  
SG13 7AX

Web [www.vmzinc.co.uk](http://www.vmzinc.co.uk)

Tel 01992 921 300

Email [vmzinc.uk@vmbuildingsolutions.com](mailto:vmzinc.uk@vmbuildingsolutions.com)

